



The H.E.A.L.L Project

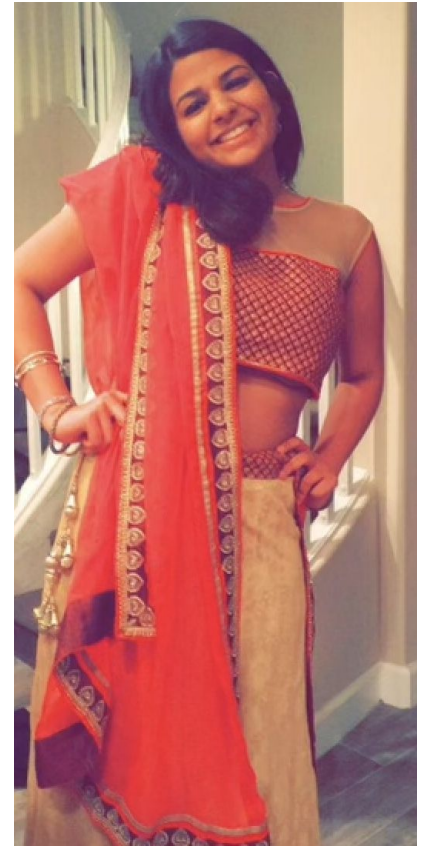
Rhea Churi

Mentor: Dr. Jayathi Murthy

IRI 2021-2022

A Little About Me

- AZ-> Ca
- 4th year Neuroscience Major
- Global Health Minor
 - Got me involved in healthcare equity
 - Found IRI!



—The Healthcare Issue

- U.S. Healthcare spending at the highest - \$12k per person
- Racial/ethnic groups suffer the worst
 - high rates of infant mortality,
 - 15-20% more likely to die in hospitals,
 - lack of access
 - Need equity!

The H.E.A.L.L Project

- Health Equity and Accessibility for ALL
- We trust doctors are doing the best for us... Are they?
- Combatting discrimination in the medical system

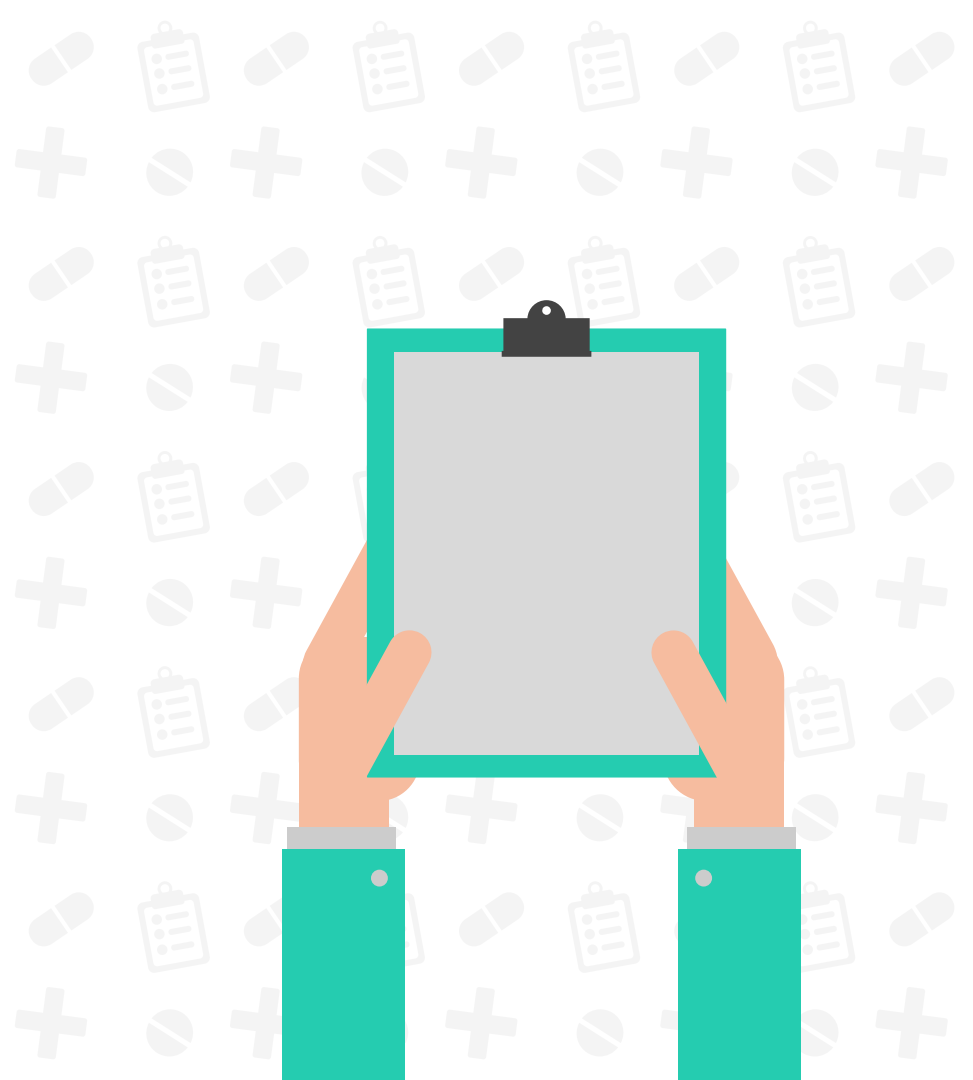


Table of Contents

01

Survey

- Administered through Anon Forms
- Demographics, SES status, Reviewal of Healthcare options, Suggestions

03

Expansion

Student groups at UCLA,
Natives of LA

02

Expansion

Unhoused Population in Los Angeles - 76% of Data collection
Partnered with MCP

04

Results

- Public Health Paper Review and Publication
 - Telehealth Movement

Results



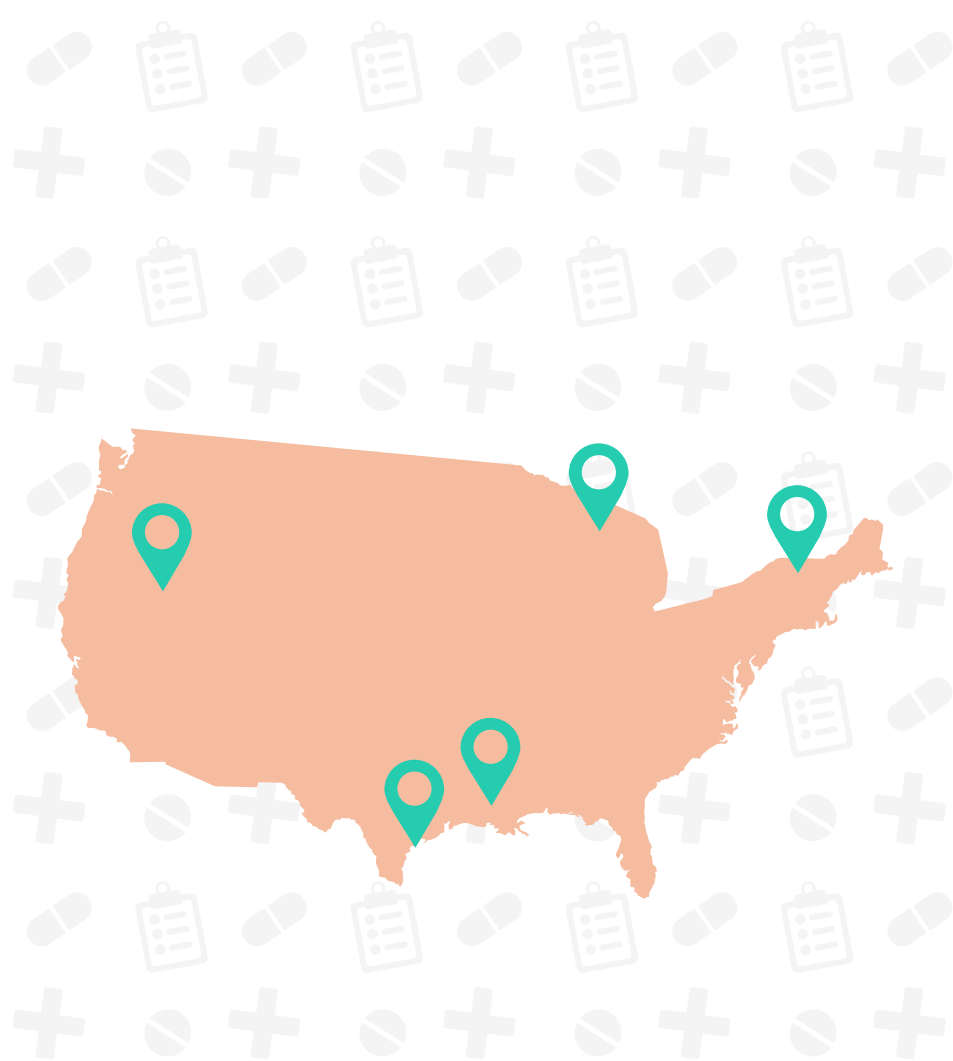
- **Emphasis on Social History**
- **Access to TeleHealth**

- **Patient to Client Focus**
- **The Ignorance Issue - Awareness of Discrimination**
- **Data Sharing**
- **Universal Healthcare**



Future Steps

- Telehealth Movement
 - Access to phones
- Partnering with other Colleges around the U.S.
- Long-term: Build Accessible Reviewal Site!
 - Open Hospitals to Share Data





Dr. Jayathi Murthy



**Dr. Leonard Kleinrock,
Bill Wu, the IRI Board**

**Also to:
Fielding School
of Public
Health, MCP,
UCLA, and my
parents!**

Thank you!